



51

BATTERY
POINT

HOBART

51

THE VISION

We are committed to delivering beautiful contemporary style apartments at a compelling price point in what is one the very best locations in all of Australia. For those aspiring to live or invest in one of the most convenient, historically significant and culturally vibrant locations in all of Australia, it's hard to go past 51batterypoint.



DESIGN

Designed by JAWS Architects, this is unashamedly a contemporary building, which simultaneously stands apart from and compliments the magnificent Henry Hunter designed Gattonside which sits alongside it. Of the twenty apartments, not one is the same. They are all unique, yet have their own outdoor areas, secure undercover parking, floor to ceiling glazing and secure lift access.

INTERIORS

Open plan in design with natural 'flow' between indoor and outdoor living areas, separated by full height glazing and allowing sunlight to flow in. Bespoke joinery, stone bench and vanity tops, and crisp clean colour palette allowing residents to introduce their personality and style.



LOCATION

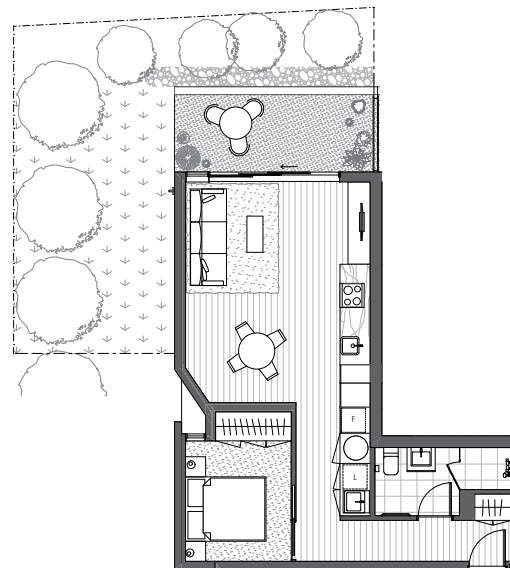
Exceptional position, within short walking distance of historic Battery Point village, world famous Salamanca Place, the vibrancy and atmosphere of our waterfront, the City Centre which is undergoing a once in 100-year renaissance – everything that makes Hobart one of most beautiful small cities in the world.



FLOOR PLANS

This is no bland complex where every apartment is identical. Each and every apartment at 51batterypoint is distinct, having its own individual design, floor-plan, aspect and outdoor area. This is a rarity.

APARTMENT 1

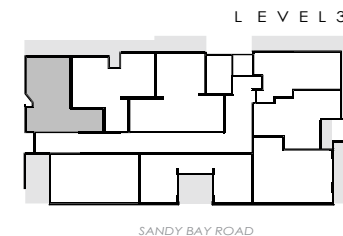


BEDROOMS	1
BATH ROOMS	1
LAUNDRY	1
PARKING	yes

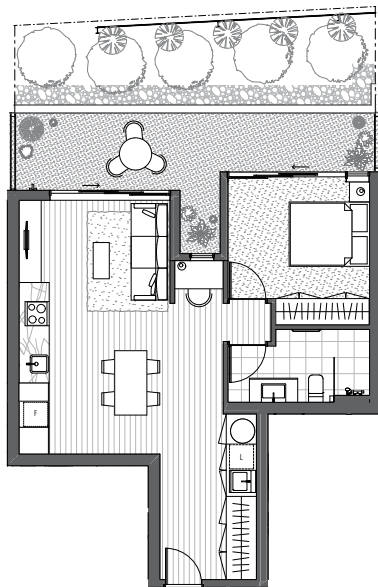
GROSS AREA **59.0 m2**

INTERNAL	53.0 m2
LIVING AREA	26.5 m ²
BEDROOM	9.0 m ²

EXTERNAL	52.5 m2
TERRACE	10.0 m ²
TOTAL (I&E)	105.5 m2



APARTMENT 2

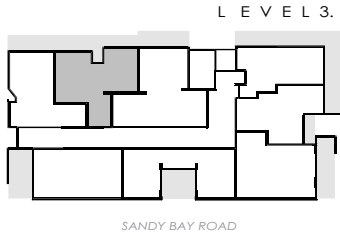


BEDROOMS	1
BATH ROOMS	1
LAUNDRY	1
PARKING	yes

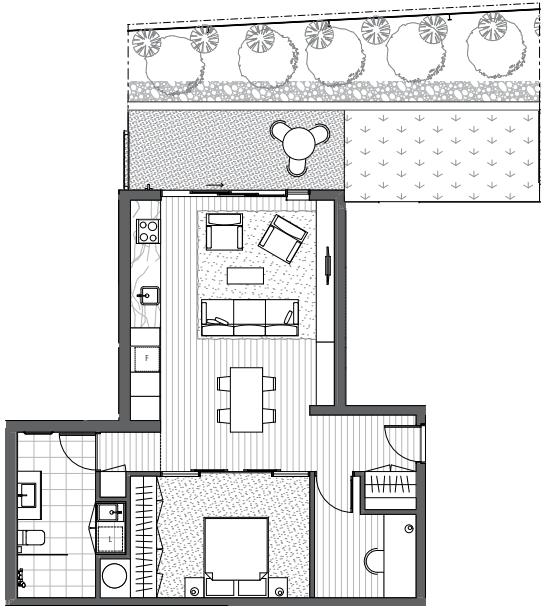
GROSS AREA **65.0 m2**

INTERNAL	59.0 m2
LIVING AREA	29.0 m²
BEDROOM	12.0 m²

EXTERNAL	38.5 m2
TERRACE	17.0 m²
TOTAL (I&E)	97.5 m2



APARTMENT 3

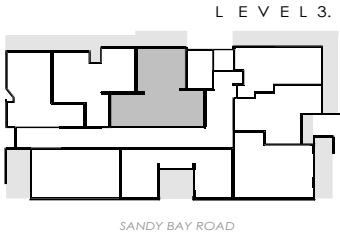


BEDROOMS	1
BATH ROOMS	1
LAUNDRY	1
PARKING	yes

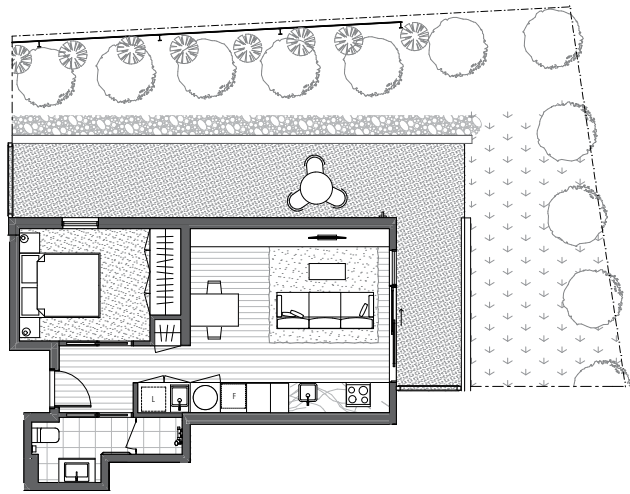
GROSS AREA **76.5 m2**

INTERNAL	71.5 m2
LIVING AREA	32.5 m²
BEDROOM	13.5 m²

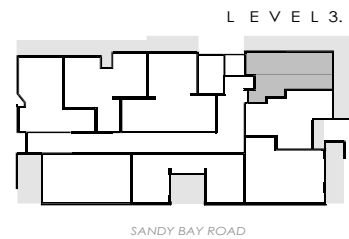
EXTERNAL	46.0 m2
TERRACE	11.0 m²
TOTAL (I&E)	117.5 m2



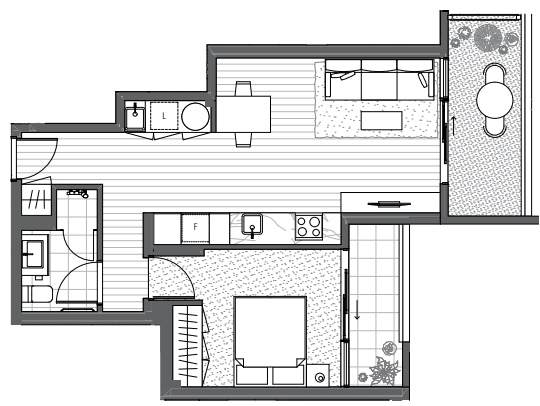
APARTMENT 4



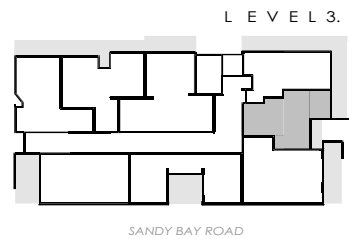
BEDROOMS	1
BATH ROOMS	1
LAUNDRY	1
PARKING	yes
GROSS AREA	50.5 m2
INTERNAL	45.5 m2
LIVING AREA	22.0 m²
BEDROOM	10.5 m²
EXTERNAL	92.0 m2
TERRACE & BALCONY	21 & 7 m²
TOTAL (I&E)	137.0 m2



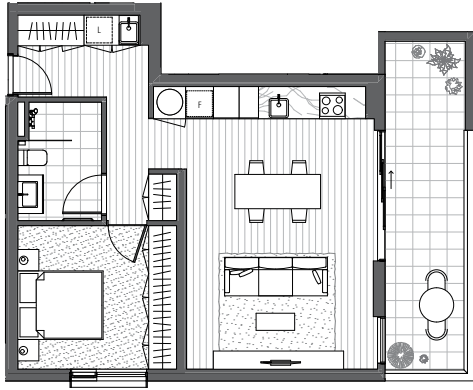
APARTMENT 5



BEDROOMS	1
BATH ROOMS	1
LAUNDRY	1
PARKING	yes
GROSS AREA	52.5 m2
INTERNAL	47.5 m2
LIVING AREA	21.0 m²
BEDROOM	11.5 m²
EXTERNAL	11.5 m2
2 BALCONIES	7.5 & 4.5 m²
TOTAL (I&E)	59.0 m2



APARTMENT 6



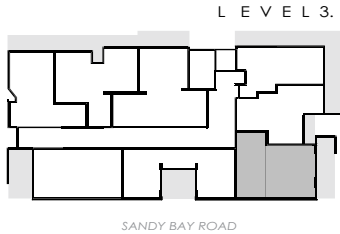
BEDROOMS	1
BATH ROOMS	1
LAUNDRY	1
PARKING	yes

GROSS AREA **66.5 m2**

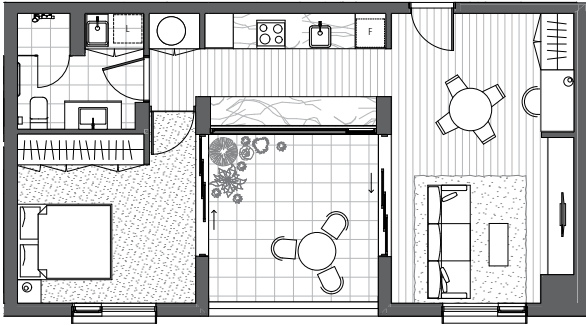
INTERNAL	60.0 m2
LIVING AREA	29.0 m²
BEDROOM	12.5 m²

EXTERNAL 15.0 m2
BALCONY

TOTAL (I&E) **75.0 m2**



APARTMENT 7



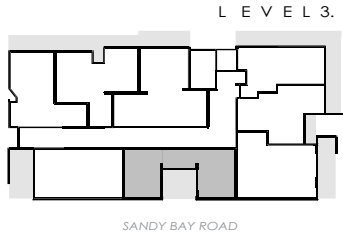
BEDROOMS	1
BATH ROOMS	1
LAUNDRY	1
PARKING	yes

GROSS AREA **64.5 m2**

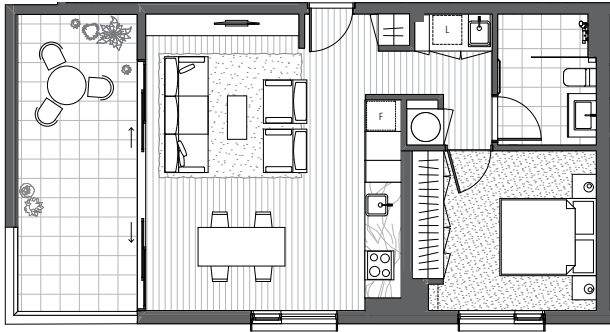
INTERNAL	57.0 m2
LIVING AREA	30.5 m²
BEDROOM	14.0 m²

EXTERNAL 13.5 m2
BALCONY

TOTAL (I&E) **70.5 m2**



APARTMENT 8



BEDROOMS	1
BATH ROOMS	1
LAUNDRY	1
PARKING	yes

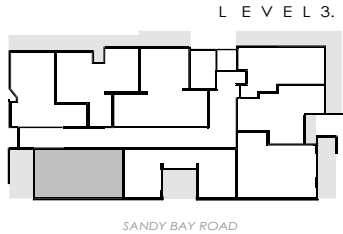
GROSS AREA **62.5 m2**

INTERNAL	57.5 m2
LIVING AREA	31.0 m²
BEDROOM	12.5 m²

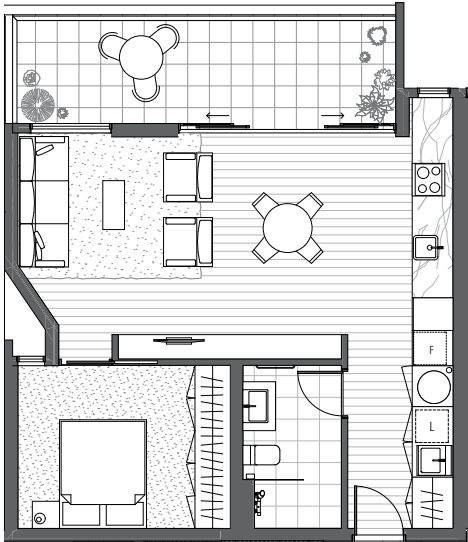
EXTERNAL 15.5 m2

BALCONY

TOTAL (I&E) **73.0 m2**



APARTMENT 9



BEDROOMS	1
BATH ROOMS	1
LAUNDRY	1
PARKING	yes

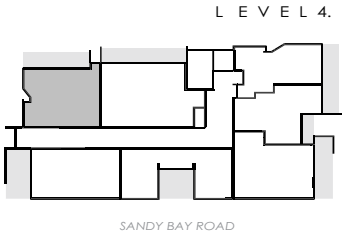
GROSS AREA **63.5 m2**

INTERNAL	58.0 m2
LIVING AREA	32.5 m²
BEDROOM	11.5 m²

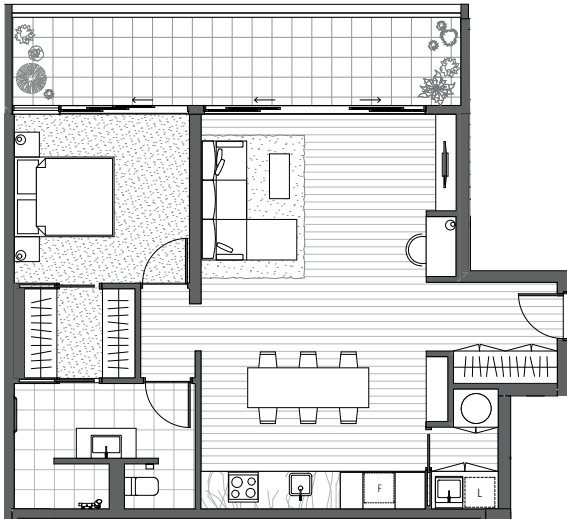
EXTERNAL 14.0 m2

BALCONY

TOTAL (I&E) **72.0 m2**



APARTMENT 10



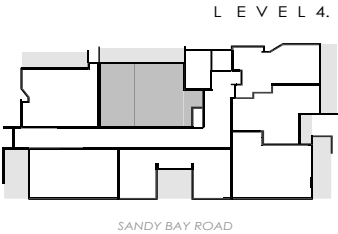
BEDROOMS	1
BATH ROOMS	1
LAUNDRY	1
PARKING	yes

GROSS AREA **81.5 m2**

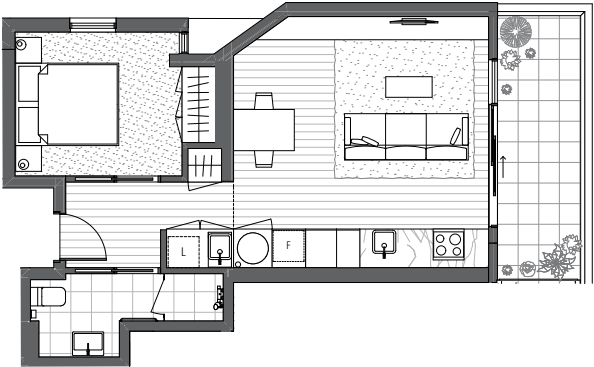
INTERNAL	77.0 m2
LIVING AREA	38.0 m ²
BEDROOM	12.0 m ²

EXTERNAL 17.0 m2
BALCONY

TOTAL (I&E) **94.0 m2**



APARTMENT 11



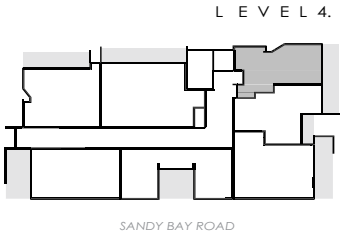
BEDROOMS	1
BATH ROOMS	1
LAUNDRY	1
PARKING	yes

GROSS AREA **51.5 m2**

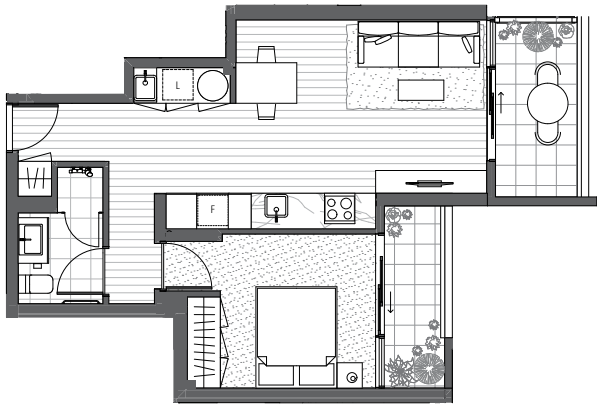
INTERNAL	45.5 m2
LIVING AREA	23.0 m ²
BEDROOM	10.0 m ²

EXTERNAL 9.0 m2
BALCONY

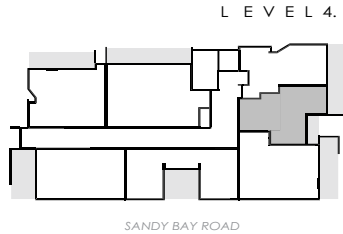
TOTAL (I&E) **54.5 m2**



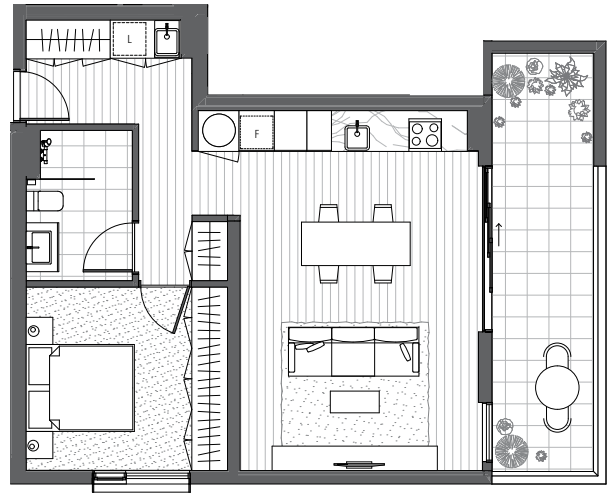
APARTMENT 12



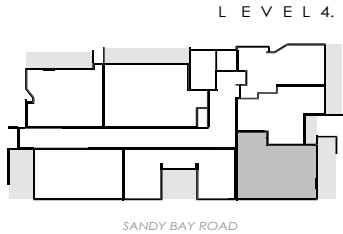
BEDROOMS	1
BATH ROOMS	1
LAUNDRY	1
PARKING	yes
GROSS AREA	52.5 m2
INTERNAL	47.5 m2
LIVING AREA	21.0 m²
BEDROOM	11.5 m²
EXTERNAL	10.0 m2
BALCONY	
TOTAL (I&E)	57.5 m2



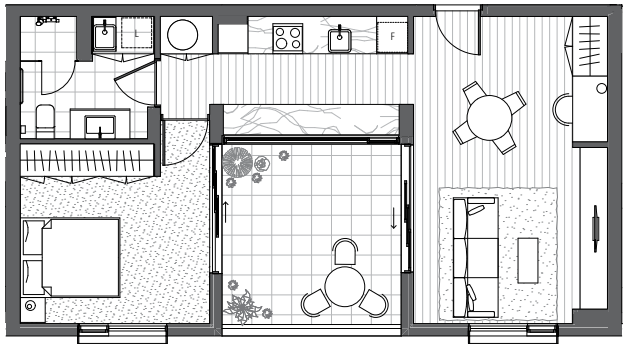
APARTMENT 13



BEDROOMS	1
BATH ROOMS	1
LAUNDRY	1
PARKING	yes
GROSS AREA	66.5 m2
INTERNAL	60.5 m2
LIVING AREA	29.0 m²
BEDROOM	12.5 m²
EXTERNAL	14.5 m2
BALCONY	
TOTAL (I&E)	75.0 m2



APARTMENT 14



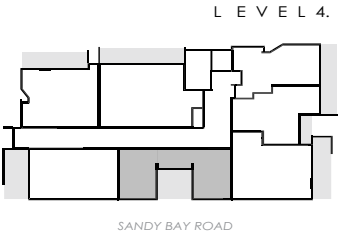
BEDROOMS	1
BATH ROOMS	1
LAUNDRY	1
PARKING	yes

GROSS AREA **64.5 m2**

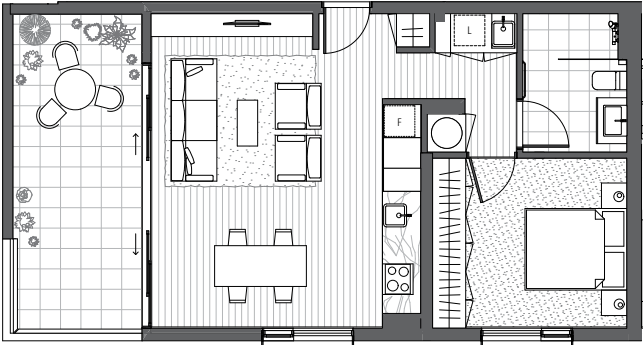
INTERNAL	58.0 m2
LIVING AREA	30.5 m ²
BEDROOM	14.0 m ²

EXTERNAL 13.5 m2
BALCONY

TOTAL (I&E) **71.5 m2**



APARTMENT 15



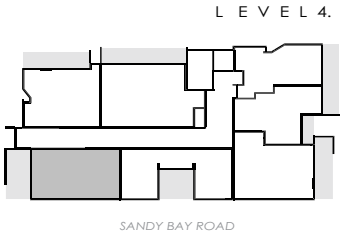
BEDROOMS	1
BATH ROOMS	1
LAUNDRY	1
PARKING	yes

GROSS AREA **63.0 m2**

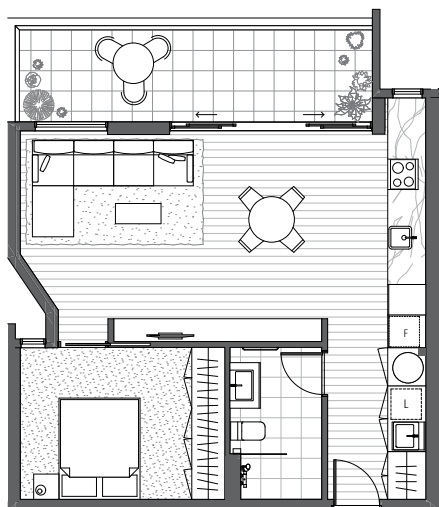
INTERNAL	57.5 m2
LIVING AREA	31.0 m ²
BEDROOM	12.5 m ²

EXTERNAL 15.5 m2
BALCONY

TOTAL (I&E) **73.0 m2**



APARTMENT 16



BEDROOMS	1
BATH ROOMS	1
LAUNDRY	1
PARKING	yes

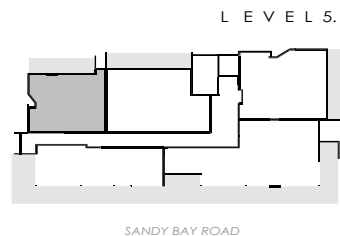
GROSS AREA **63.5 m2**

INTERNAL	58.0 m2
LIVING AREA	32.5 m²
BEDROOM	12.0 m²

EXTERNAL 13.5 m2

BALCONY

TOTAL (I&E) **71.5 m2**



APARTMENT 17



BEDROOMS	1
BATH ROOMS	1
LAUNDRY	1
PARKING	yes

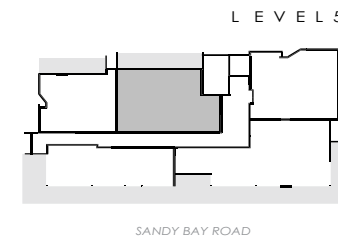
GROSS AREA **84.5 m2**

INTERNAL	80.0 m2
LIVING AREA	38.0 m²
BEDROOM	13.0 m²

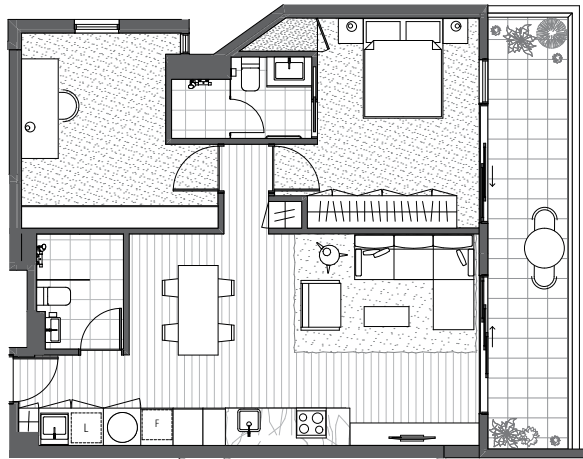
EXTERNAL 17.0 m2

BALCONY

TOTAL (I&E) **97.0 m2**



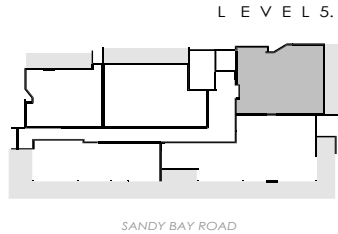
APARTMENT 18



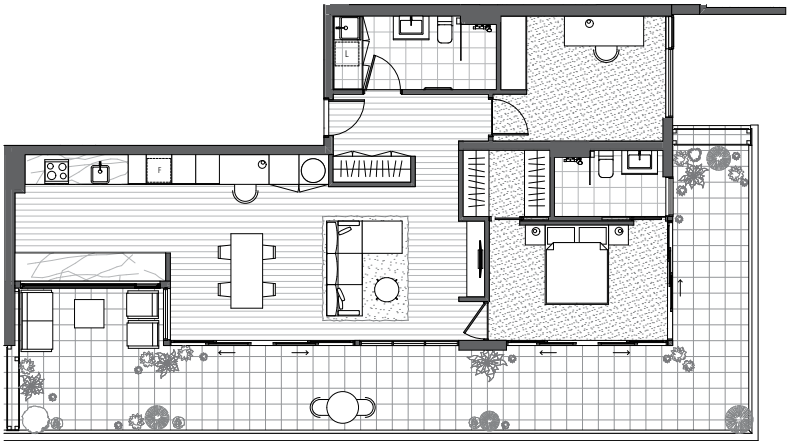
BEDROOMS	1
BATH ROOMS	2
LAUNDRY	1
PARKING	yes

GROSS AREA **82.5 m2**

INTERNAL	76.5 m2
LIVING AREA	29.5 m ²
BEDROOM	14.5 m ²
OFFICE / STUDY	13.0 m ²
EXTERNAL	15.0 m2
BALCONY	
TOTAL (I&E)	91.5 m2



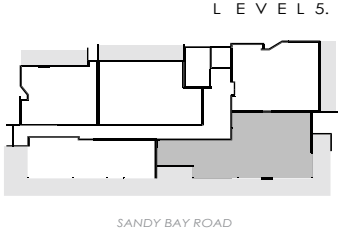
APARTMENT 19



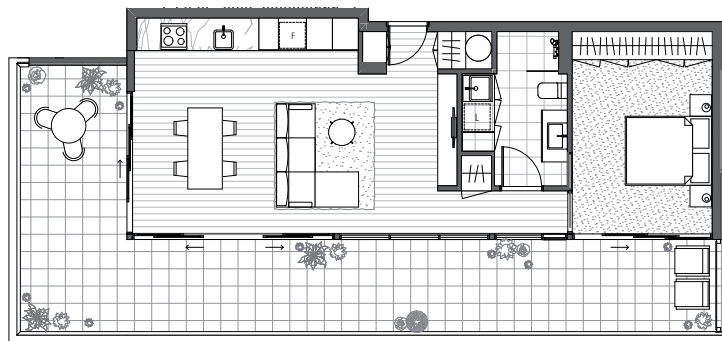
BEDROOMS	1
BATH ROOMS	2
LAUNDRY	1
PARKING	yes

GROSS AREA **107.0 m2**

INTERNAL	100.0 m2
LIVING AREA	45.5 m ²
BEDROOM	13.5 m ²
OFFICE / STUDY	13.5 m ²
EXTERNAL	56.5 m2
ROOF TERRACE	
TOTAL (I&E)	156.5 m2



APARTMENT 20



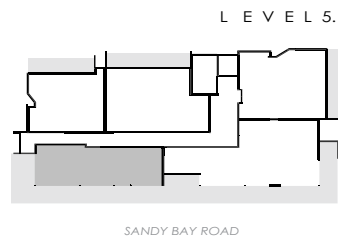
BEDROOMS	1
BATH ROOMS	1
LAUNDRY	1
PARKING	yes

GROSS AREA **69.0 m2**

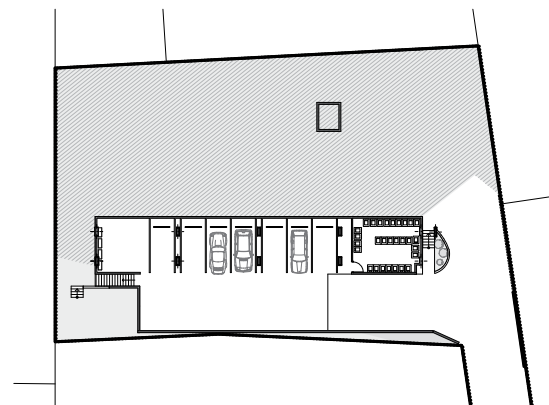
INTERNAL	64.5 m2
LIVING AREA	34.5 m²
BEDROOM	15.5 m²

EXTERNAL 46.0 m2
ROOF TERRACE

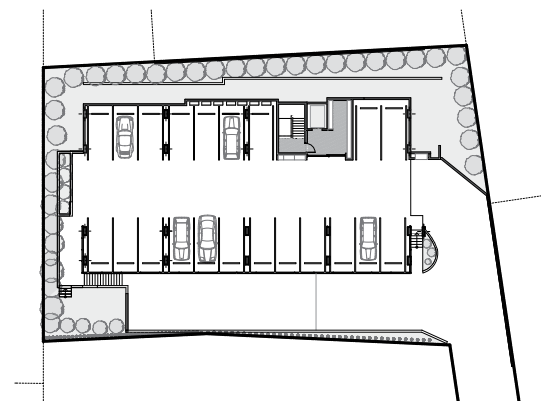
TOTAL (I&E) **110.5 m2**



CAR PARKS



CARPARK LEVEL 1



CARPARK LEVEL 2



CONNECTED

Be connected to a vibrant community, with exceptional amenity: first-class restaurants, farmer's markets, an eclectic café scene, inspiring festivals...all just a short stroll away. A place and community to enjoy with loved-ones.

DISCLAIMER - All information, images and illustrations are indicative or artist's impression only and are subject to change. Furniture and whitegoods are not included in the advertised price. Any areas shown are estimates only, based on information presently available, and may vary. Alirente Pty Ltd and its related companies and their employees and agents do not warrant the accuracy or completeness of the information, images or illustrations and do not accept any liability for any errors or discrepancies. Interested parties must not rely on this material but are advised to make their own assessment and independently verify the information.

For enquiries regarding 51batterypoint please contact the exclusive selling agent

ST ANDREWS

ESTATE AGENTS

HOBERT TASMANIA

Steve Yannarakis | 0419 429 423 | steve@standrews.estate | PO Box 173 Battery Point Tasmania 7004

www.standrews.estate